

**GENERAL NOTES:**

- DIMENSIONS ARE IN mm [inches].
- TOLERANCE +1mm (0.04 inches).
- CONTROLLER ENCLOSURE (STANDARD):**
  - MATERIAL: NEMA 4-12 (IP66) STEEL WITH POLYESTER POWDER BLUE (RAL5015) PAINT.
  - MODEL: EXM 5412 ESCH080804.
  - OUTSIDE DIMENSIONS: 203.2 X 203.2 X 101.6D (8 X 8 X 4D).
  - MOUNTING DIMENSIONS: 222.25 X 152.4 (8.75 X 6).
- CONTROLLER ENCLOSURE (OPTIONAL):**
  - MATERIAL: TYPE 4X POLYCARBONATE OPAQUE LIGHT GRAY WITH A GLOSS FINISH.
  - MODEL: INTEGRA ENCLOSURE H8084HLL.
  - OUTSIDE DIMENSIONS: 214 X 214 X 139D (8.44 X 8.44 X 5.47D).
  - MOUNTING DIMENSIONS: 241 X 133 (9.5 X 5.25).
- POWER INPUT:**
  - VOLTAGE AS PER ORDER
  - 12VDC or 24VDC or 100-240VAC, 50/60Hz.
  - TERMINALS MARKED (-) (+) ARE FOR DC POWERED UNITS.

**CERTIFICATION - CONTROLLER:**

**ORDINARY LOCATION RATING:**

- UL FILE NUMBER: E343390
- UL / IEC 61010-1, 2ND EDITION, 2008/10/28
- CAN/CSA-22.2 NO. 61010-1, 2ND EDITION, 2008/10/01
- CE: UL / IEC 61010-1; IEC / EN 61000-4; ISO 9001:2008

**CERTIFICATION - SENSOR PROBE:**

PROCESS TEMPERATURE FOR THE STANDARD & HEAVY DUTY PROBES ARE -60°C to +200°C AND FOR FLEXIBLE PROBE IS -60°C to +100°C. IT IS END-USER'S RESPONSIBILITY TO ENSURE THAT AMBIENT TEMPERATURE AROUND THE CAPACITANCE CONTROLLER AND ARJAY PROBE HEAD DOES NOT EXCEED THE PERMITTED AMBIENT OF 55°C.

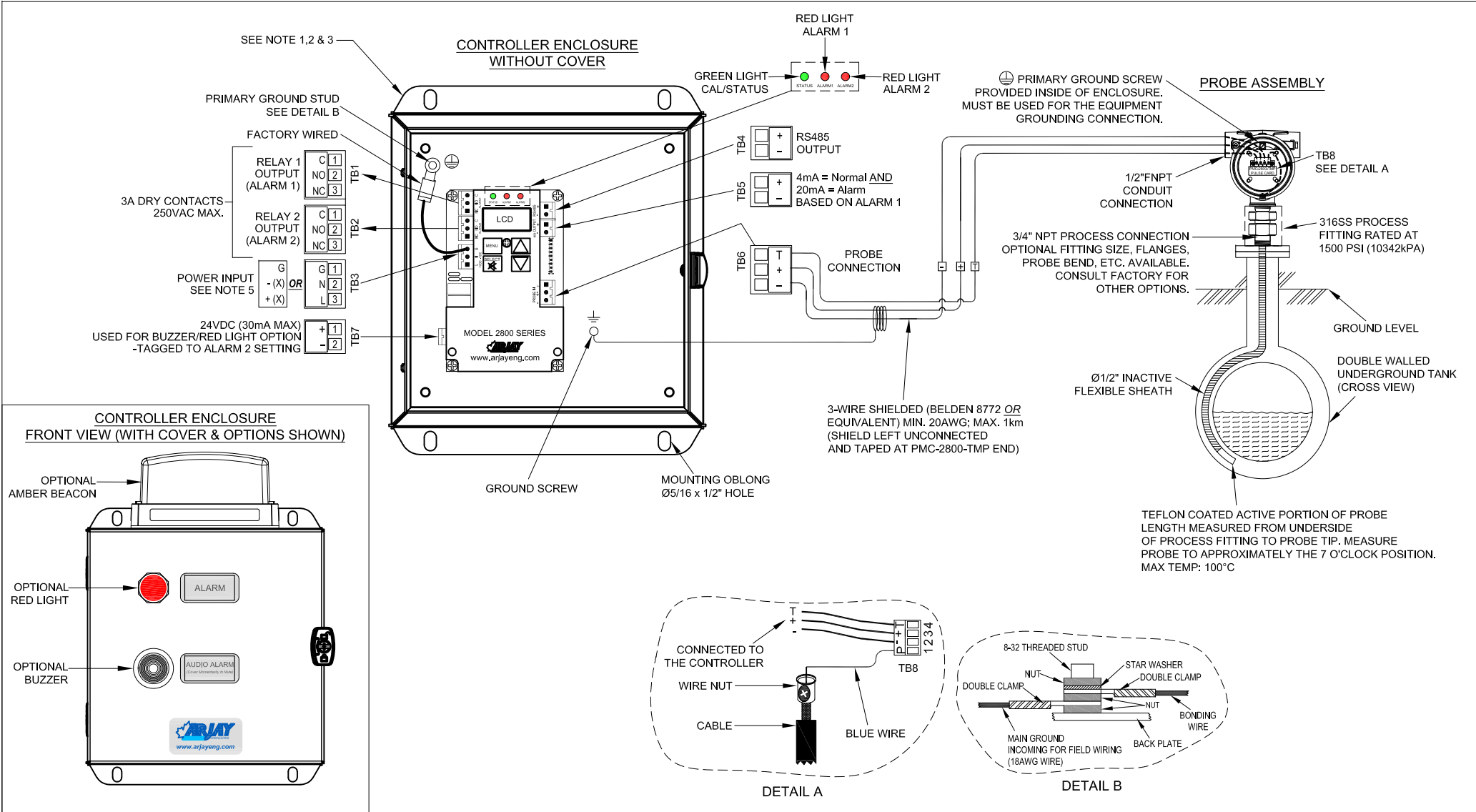
**INTRINSICALLY SAFE LOCATION RATING FOR NORTH AMERICA & INTERNATIONAL:**

- Class I, Division 1, Group A,B,C,D T4;
- Class II, Division 1, Group E,F,G
- Class III, Division 1: Ex ia IIC T4 Ga
- Class I, Zone 0, AEx ia IIC T4 Ga
- Ta: -40°C to +55°C

REV	DATE	DESCRIPTION
3	24/04/19	CHANGED TEMP. COMP WIRING.
2	28/05/18	CHANGED PROBE HOUSING TO BLUE.
1	19/04/18	REVISED.

**REVISIONS**

		<b>PROJECT</b>	
		INTERSTITIAL LEAK ALARM WITH TEMP. COMP. & IS BARRIER INPUT	
DWG. STATUS	BY	DATE	TITLE
DRAWN	F.H.	21 11 16	2852T-ILA WITH TEMP. COMP. & INTRINSIC SAFETY BARRIER DIMENSION & ELECTRICAL DRAWING
CHECKED			
APPROVED			
SCALE	REF. DWGS.	DWG. NO.	SHT. REV.
N.T.S.		20160870	1 3



**GENERAL NOTES:**

- DIMENSIONS ARE IN mm [inches].
- TOLERANCE +1mm (0.04 inches).
- CONTROLLER ENCLOSURE (STANDARD):**
  - MATERIAL: NEMA 4-12 (IP66) STEEL WITH POLYESTER POWDER BLUE (RAL5015) PAINT.
  - MODEL: EXM 5412 ESCH080804.
  - OUTSIDE DIMENSIONS: 203.2 X 203.2 X 101.6D (8 X 8 X 4D).
  - MOUNTING DIMENSIONS: 222.25 X 152.4 (8.75 x 6).
- CONTROLLER ENCLOSURE (OPTIONAL):**
  - MATERIAL: TYPE 4X POLYCARBONATE OPAQUE LIGHT GRAY WITH A GLOSS FINISH.
  - MODEL: INTEGRA ENCLOSURE H8084HLL.
  - OUTSIDE DIMENSIONS: 214 X 214 X 139D (8.44 X 8.44 X 5.47D).
  - MOUNTING DIMENSIONS: 241 X 133 (9.5 x 5.25).
- POWER INPUT:**
  - VOLTAGE AS PER ORDER
  - 12VDC or 24VDC or 100-240VAC, 50/60Hz.
  - TERMINALS MARKED (-) (+) ARE FOR DC POWERED UNITS.

**CERTIFICATION - CONTROLLER:**

**ORDINARY LOCATION RATING:**

- UL FILE NUMBER: E343390
- UL / IEC 61010-1, 2ND EDITION, 2008/10/28
- CAN/CSA-22.2 NO. 61010-1, 2ND EDITION, 2008/10/01
- CE: UL / IEC 61010-1; IEC / EN 61000-4; ISO 9001:2008

**CERTIFICATION - SENSOR PROBE:**

PROCESS TEMPERATURE FOR THE STANDARD & HEAVY DUTY PROBES ARE -60°C to +200°C AND FOR FLEXIBLE PROBE IS -60°C to +100°C. IT IS END-USER'S RESPONSIBILITY TO ENSURE THAT AMBIENT TEMPERATURE AROUND THE CAPACITANCE CONTROLLER AND ARJAY PROBE HEAD DOES NOT EXCEED THE PERMITTED AMBIENT OF 55°C.

**HAZARDOUS LOCATION RATING FOR NORTH AMERICA:**

- Ex db IIC T5 Gb
- Class I, Zone 1, AEx db IIC T5 Gb

**HAZARDOUS LOCATION RATING FOR INTERNATIONAL:**

- II 2G Exd T5 Gb
- Sira 17ATEX2261X
- IECEx CSA 17.0019X

REV	DATE	DESCRIPTION
3	24/04/19	CHANGED TEMP. COMP WIRING.
2	28/05/18	CHANGED PROBE HOUSING TO BLUE.
1	19/04/18	REVISED.

**REVISIONS**

<b>ARJAY ENGINEERING LIMITED</b>	<b>PROJECT</b>
	INTERSTITIAL LEAK ALARM WITH TEMP. COMP. INPUT

DWG. STATUS	BY	DATE	TITLE
DRAWN	F.H.	21 11 16	2852T-ILA WITH TEMP. COMP. DIMENSION & ELECTRICAL DRAWING
CHECKED			
APPROVED			
SCALE	REF. DWGS.	DWG. NO.	SHT. REV.
N.T.S.		20160871	1 3