

NOTE: INPUT VOLTAGE PER ORDER 24VDC, 115VAC, 220VAC

WITHOUT COVER

TYPE 4X FIBERGLASS POLYESTER

MOUNTING HOLE IS A SLOT .3"V X .5" L

SHIELD AND - GO TOGETHER INTO TERMINAL #4 OF ISB

RELAY LIGHT FAILSAFE OR NON FAILSAFE MODE CAL/STATUS LIGHT CALIBRATE DIELECTRIC LDW--HIGH SENSITIVITY ALARM DELAY RELAY (FAILSAFE) LDW--HIGH INTRINSIC SAFETY BARRIER

2 WIRE SHIELDED 20 AWG MIN. MAX. 1 KM (SHIELD LEFT UNCONNECTED AT PROBE END)

1/2" NPT (TYPE 2 PLACES)

PROBE IN

FIELD

CONTROL ROOM

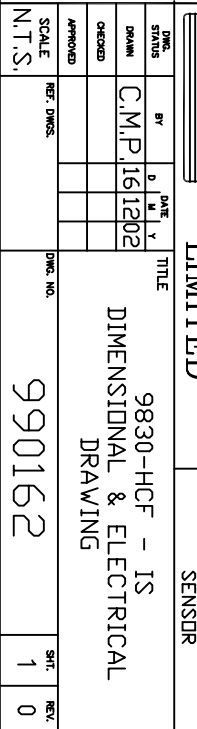
MAX. DISTANCE 1km

MOUNT ABOVE SURGE/FLOOD LEVEL

35' (10 METERS) OF RG62AU CO-AXIAL CABLE POTTED AT SENSOR

CIRCULAR DIAMETER OF FLUAT SENSOR = 21'

STANDARD SIZE SHOWN. CUSTOM SIZES ARE AVAILABLE.



NOTE: MAKE SURE JUNCTION BOX IS ELECTRICALY GROUNDDED.

ALUMINUM JUNCTION BOX (NEMA 4X)

PNC-9060 PULSE CARD

123

P-+

GND

123

P-+

FRONT VIEW

FLUAT SENSOR PS-010

3.5"

PLAN VIEW

18.5"

3.5"

DIMENSIONS ARE IN INCHES

ENCLOSURE IS A HOFFMAN A-864CHQRF G

ENCLOSURE DIMENSIONS ARE 8.5 X 7.0 X 4.5 D

ENCLOSURE MOUNTING DIMENSIONS ARE 9 X 4

REV	DATE	DESCRIPTION	CHK'D	APP'D
REVISIONS				

<b>ARJAY</b> ENGINEERING LIMITED	DATE	BY	TITLE
	DRAWN	C.M.P.	9830-HCF - IS
	CHECKED		DIMENSIONAL & ELECTRICAL
	APPROVED		DRAWING

SCALE	REF. DIMS.	DWG. NO.	SHT.	REV.
N.T.S.		990162	1	0

PROJECT:	HYDROCARBON FLUAT SENSOR
----------	--------------------------