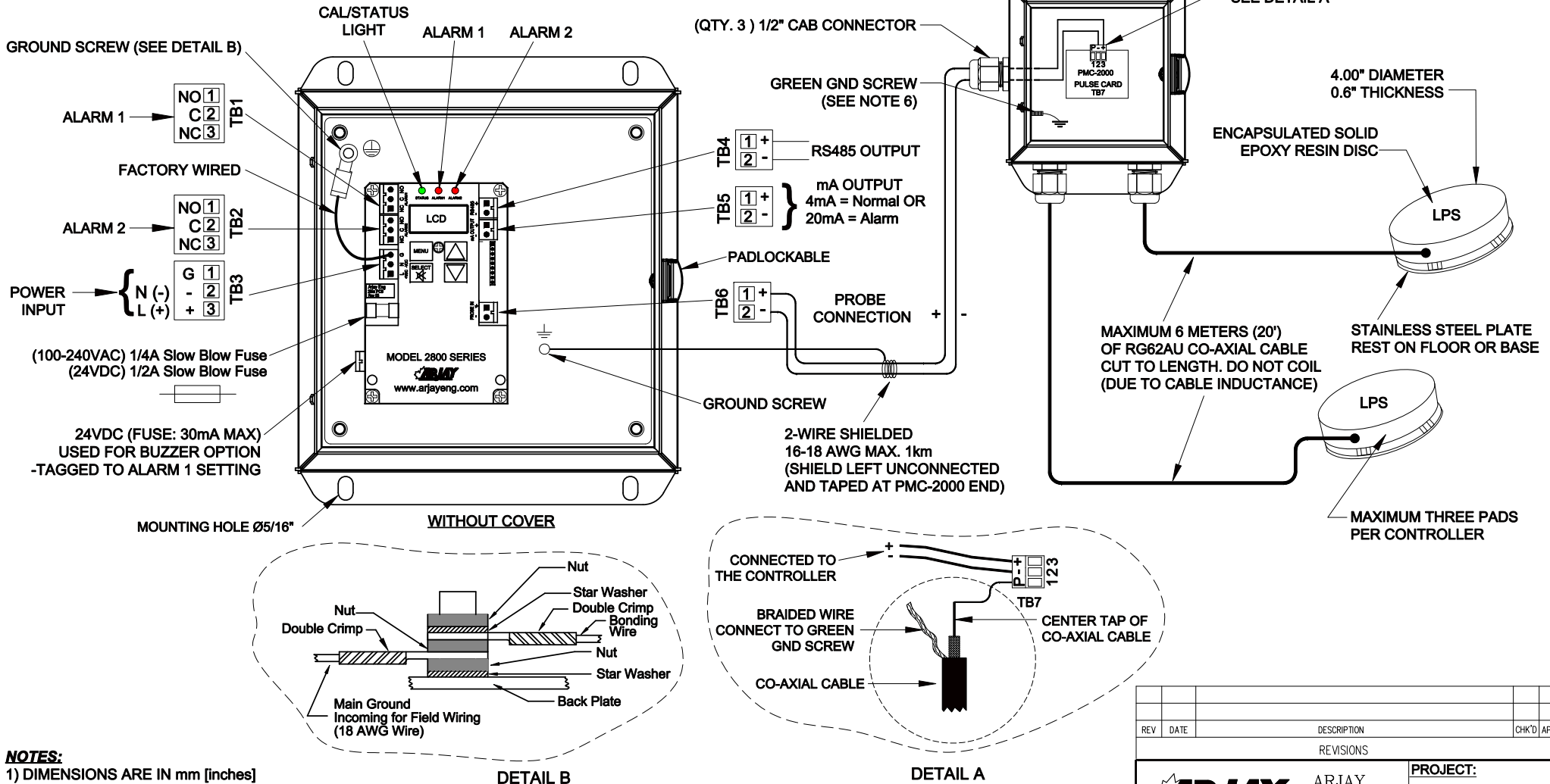


**NOTE-A:**  
 INPUT VOLTAGE PER ORDER  
 24VDC OR 100VAC-240VAC  
 TERMINALS MARKED (-) (+) ARE  
 FOR DC POWERED UNITS



- NOTES:**
- 1) DIMENSIONS ARE IN mm [inches]
  - 2) POLYESTER POWDER BLUE (RAL5015) PAINT.
  - 3) ENCLOSURE IS A EXM ESCH080804
  - 4) ENCLOSURE DIMENSIONS ARE 203.2 X 203.2 X 101.6D (8 X 8 X 4D)
  - 5) ENCLOSURE MOUNTING DIMENSIONS ARE 222.25 X 152.4 (8.75 x 6)
  - 6) MAKE SURE JUNCTION BOX IS ELECTRICAL GROUNDED VIA TANK (IF GROUNDED OR SEPARATE GND WIRE).
  - 7) TYPE 4X POLYCARBONATE ENCLOSURE (OPTIONAL) - MOUNTING FEET DIMENSION 222.25 x 101.6 (8.75 x 4)
  - 8) ENCLOSURE IS A EXM ESCH040403. ENCLOSURE DIMENSIONS ARE 101.6 X 101.6 X 76.2D (4 X 4 X 3D)
  - 9) ENCLOSURE MOUNTING DIMENSIONS ARE 124.46 X 66.9 (4.9 x 2.64)

REV	DATE	DESCRIPTION	CHK'D	APP'D
REVISIONS				
			<b>PROJECT:</b> LEAK PAD SENSOR	
DWG. STATUS	BY	D	DATE	TITLE
	F.H.		03 11 10	2852-LPS DIMENSIONAL & ELECTRICAL DRAWING
CHECKED				
APPROVED				
SCALE	REF. DWGS.	DWG. NO.	SHT.	REV.
N.T.S.		20100740	1	0