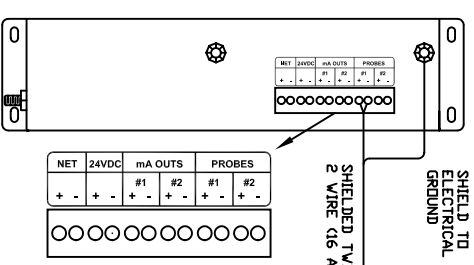
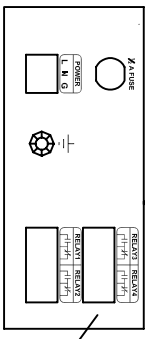


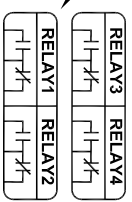
ENCLOSURE:
NEMA 4X, FIBERGLASS
14.5" X 12" X 7.5" DEEP



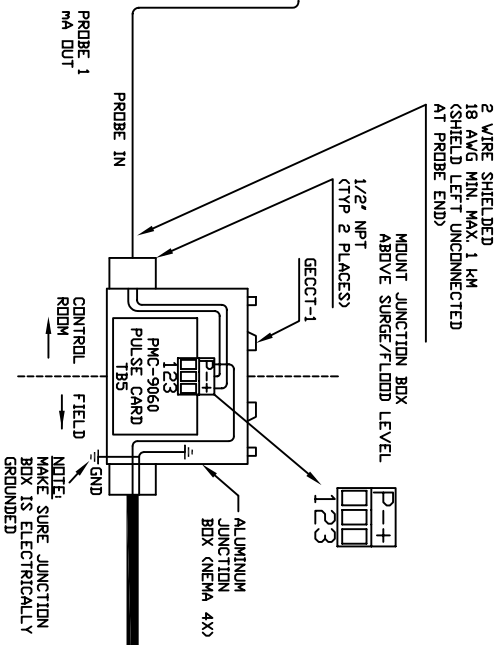
RIGHT SIDE VIEW



NOTE:
POWER CONNECTION
120 VAC DR 220 VAC
AS PER MODEL NUMBER



NOTE:
R1, R2, R3 & R4 CONNECTIONS
10 AMP AT 120 VAC
10 AMP AT 24 VDC
RESISTIVE LOAD
DRY CONTACTS

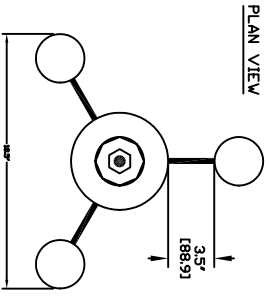


2 WIRE SHIELDED
18 AWG MIN. MAX. 1 KM
(SHIELD LEFT UNCONNECTED
AT PROBE END)

MOUNT JUNCTION BOX
ABOVE SURGE/FLUDD LEVEL
1/2" NPT
(TYPE 2 PLACES)

ALUMINUM
JUNCTION
BOX (NEMA 4X)

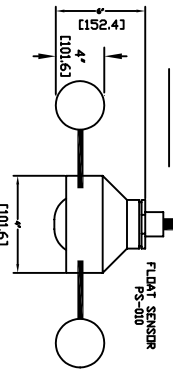
NOTE: SURE JUNCTION
BOX IS ELECTRICALLY
GROUNDED



PLAN VIEW

CIRCULAR DIA. OF FLOAT SENSOR = 21" [533.41]
STANDARD SIZE SHOWN.
CUSTOM SIZES ARE AVAILABLE.

35' (10 METERS) OF
RG65AU CO-AXIAL
CABLE POTTED
AT SENSOR



FRONT VIEW

ALL DIMENSIONS ARE IN INCHES

REV	DATE	DESCRIPTION	CHK'D	APP'D
REVISIONS				
		PROJECT:	2114 HCF	
		HCF CONTROLLER ELECTRICAL OVERVIEW		
DRWN	DATE	TITLE		
C.M.P.	09/12/02	HCF CONTROLLER ELECTRICAL OVERVIEW		
APP'D				
SCALE	REV. NO.	SCALE		
N.T.S.		20020290		