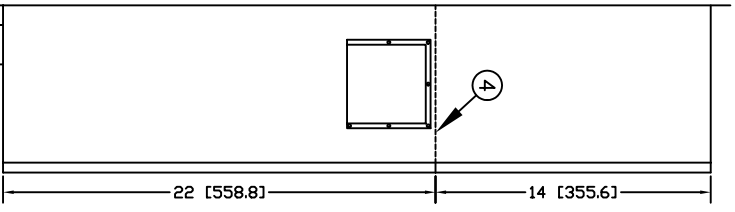
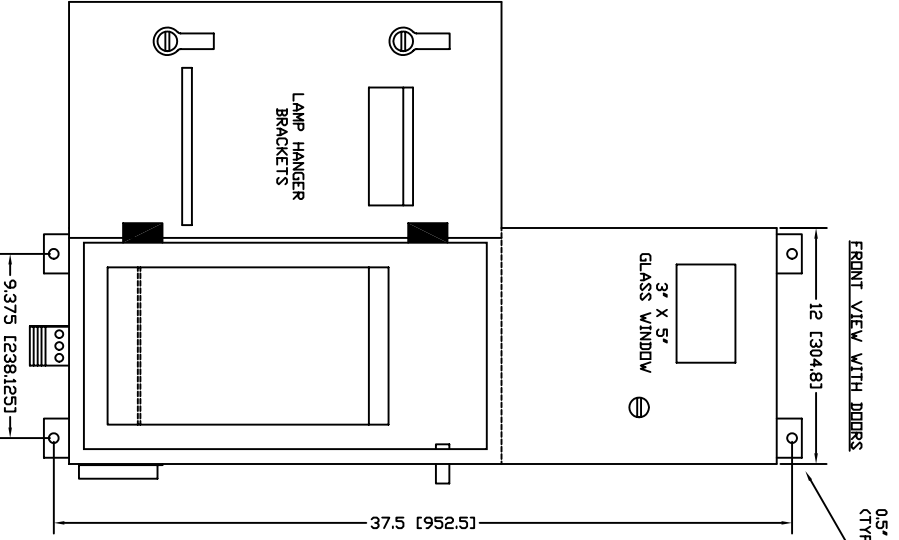


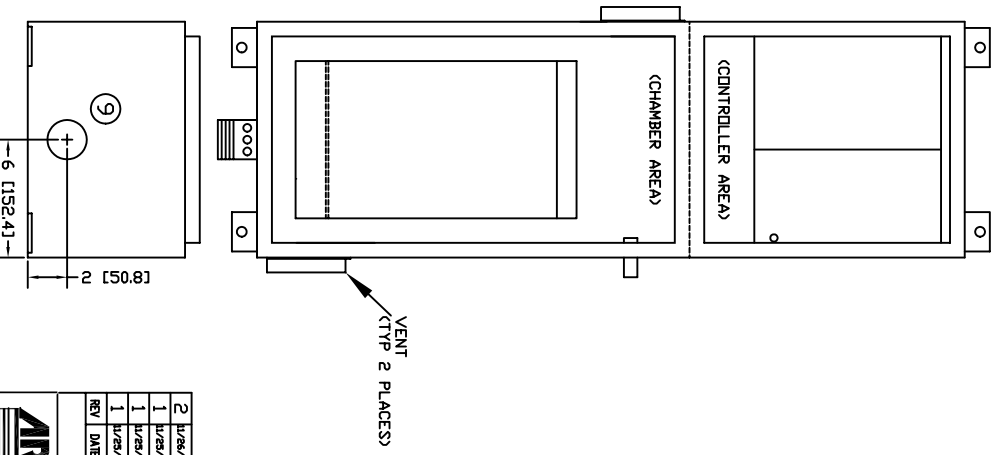
LEFT SIDE VIEW



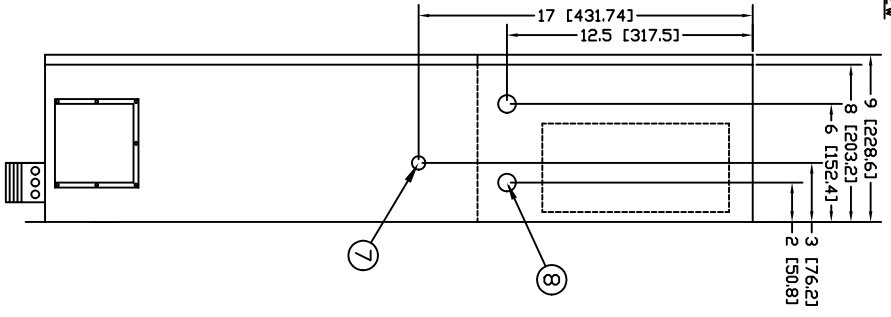
FRONT VIEW WITH DOORS



FRONT VIEW WITHOUT DOORS



RIGHT SIDE VIEW



- NOTES:
- 1) ALL DIMENSIONS ARE IN INCHES AND (MM).
 - 2) ALL MATERIAL IS 316 SS.
 - 3) OVERALL SYSTEM DIMENSIONS ARE 36 X 12 X 9 DEEP.
 - 4) THE SYSTEM CONSISTS OF 2 ENCLOSURES WELDED TOGETHER.
 - 5) CONTROLLER NOMINAL DIMENSIONS ARE 14 X 12 X 9 DEEP.
 - 6) CHAMBER NOMINAL DIMENSIONS ARE 22 X 12 X 9 DEEP.
 - 7) 3/8" NPT COUPLING - PROCESS INLET.
 - 8) 2 X 1/2" NPT HOLES - FOR POWER IN & SIGNALS OUT
 - 9) 2" NPT X 2" NIPPLE WITH 8 X 0.25" RADIAL HOLES - GRAVITY TO DRAIN OUTLET WITH PLUGGED DRAIN PROTECTION.

REV	DATE	BY	CHKD	DESCRIPTION	REVISIONS
2		h/ps/ed		EDITED ENC. MTG DIMS. TO ROUND NUTS	
1		h/ps/ed		EDITED INFORMATION IN NOTES DESCRIPTION	
1		h/ps/ed		ADDED MOUNTING DIMENSIONS	
1		h/ps/ed		ADDED MILLIMETER DIMENSIONS	

	ARJAY ENGINEERING LIMITED
PROJECT:	HYDRUSENSE VENT SYSTEM OVERVIEW DRAWING

TITLE:	HYDRUSENSE VENT SYSTEM OVERVIEW DRAWING
SCALE:	N.T.S.
DATE:	20020019
SHEET NO.:	1
TOTAL SHEETS:	2